

Equipment Servicing

Keeping track of all the important information about your equipment, customer equipment, equipment returned to the manufacturer, and equipment currently under repair is a demanding task. Equipment is constantly on the move and changing. A great way to keep control of your equipment is with SouthWare's Equipment Servicing.

S O U T H W A R E E X C E L L E N C E S E R I E S >

BENEFITS

SERVICE MANAGEMENT

The screenshot displays a software window titled "Maintain Customer Equipment Info". It contains two main sections: "SERVICE" and "BILLING".

SERVICE Section:

- 1. Contract#: 1
- 2. Line #: 1
- 4. Equip ID: C3156
- 5. Serial #: 1
- 7. Location: [Field]
- 8. In Service: 01/21/03
- 9. Out of Service: [Field]
- 12. Priority: 1
- 13. Travel Miles: N/A
- 14. Serv. Territory: N/A
- 15. Serv. Tag ID #: [Field]

BILLING Section:

- 20. Cont. Value: 3700.00
- 21. Base Price: 1850.00
- 24. Comment: [Field]

Buttons at the bottom include "OK" and "Cancel".

Customer Equipment Record

- Know the detailed service history for each piece of equipment you service
- Know the warranty dates on each piece of equipment you sell so you can bill service work accurately and know when to offer a service contract
- Keep track of a piece of equipment as it moves between customers or contracts
- Automatically schedule preventive maintenance service work on equipment that is under contract
- Price your service contracts based on rates per piece of equipment on the contract
- Instantly know whether a piece of equipment is covered by a service contract
- Make sure you propose a service contract on every piece of equipment you sell
- Keep track of metered usage on certain equipment
- Know the profitability and repair history of each model of equipment you service

Equipment Servicing handles the equipment tracking functions for SouthWare's Service Management Series, a complete system for service businesses. With Equipment Servicing you get thorough equipment records so you can provide great service and get paid for your service.



Features & Functionality

Standard Equipment Model Features

- Extensive standard information
- Manufacturer info
- Standard preventive maintenance schedules
- General warranty periods and warranty periods for up to 10 components
- Skills/training needed for servicing
- Contract pricing

Customer Equipment Features

- Track by serial #, tag #, or system
- Specific warranty dates based on model
- Sales information
- Loan, rent, out-of-service indicator
- Complete contract history
- Contract pricing information
- Complete history of service orders
- Meter reading history
- Billing, cost, and profit information
- Notes and optional Extended Data

Preventive Maintenance Features

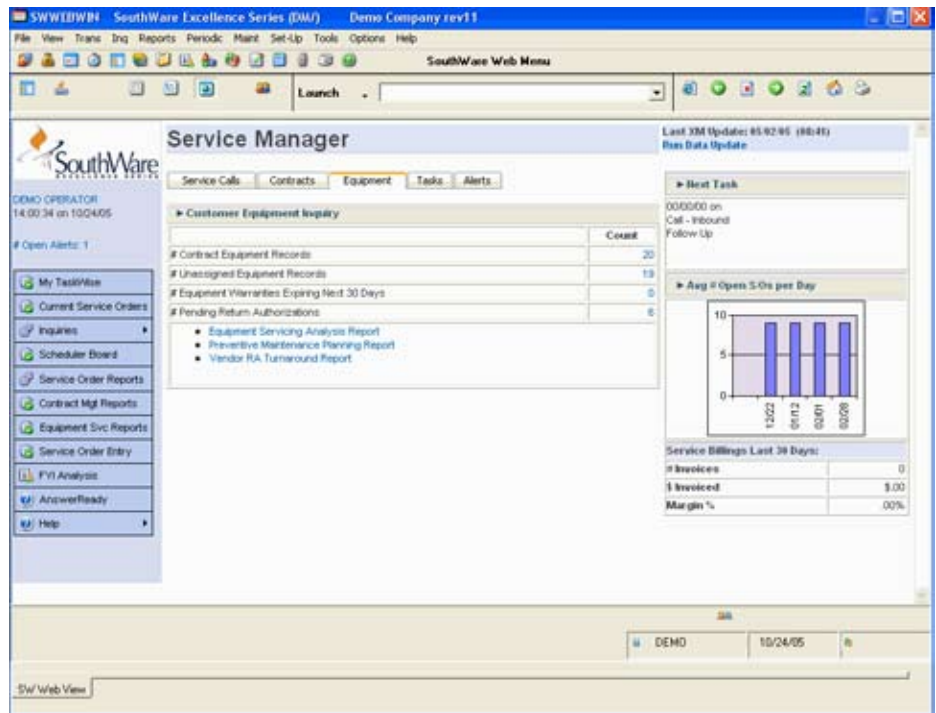
- Up to 10 schedules per equipment model
- Based on time elapsed or metered usage
- Generate PM service orders for equipment

Meter Readings

- Option per equipment model
- Contract billing provides for base units and rate table for excess usage
- Unlimited history of meter readings
- Record initial, actual, or estimated readings

Interface with Return Authorizations module

- Track returns for credit, repair, exchange, warranty work
- Internal or customer-owned equipment



Service Manager Portal

Integration with Contracts and Service Orders

- Link to contracts and service orders
- Contract billing, service warranties

Interface from Inventory/Sales

- Automatically create service records for sold equipment
- Interface with parts Inventory, Purchasing

Equipment Servicing can help you answer such questions as:

- What equipment is under service contract to this customer?
- What warranties will expire next month on equipment that we've sold so we can offer service contracts?
- Which equipment models have had a poor reliability factor over the last 12 months?
- Do we have the parts we need to do the preventive maintenance scheduled for next week?

- Didn't we have this same problem with this piece of equipment a couple of months ago?
- How many excess units did we bill on this copier last quarter?
- Are we still waiting on an exchange unit to finish this service order?
- Which customer equipment records are not currently covered under a service contract?
- Is the fan in this unit still under warranty?

BTM Solutions, Inc
 SOFTWARE SOLUTIONS. THE RIGHT WAY. THE RIGHT PEOPLE.
 Phone: 662-328-2400
 Fax: 662-328-4858
 E-mail: sales@btmsolutions.com
 Address:
 572 Yorkville Road East
 Columbus, Mississippi 39702

