

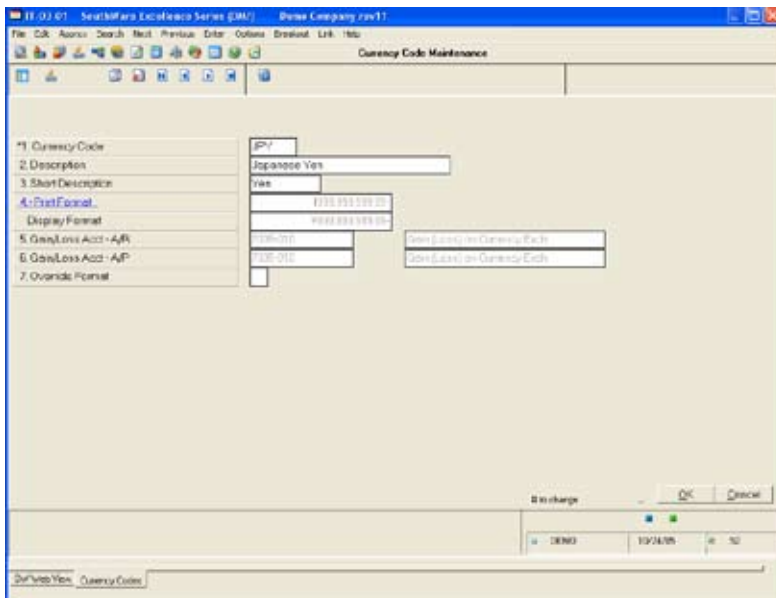
# International Transactions

Many U.S. and Canadian businesses have business trading partners -- vendors or customers -- who are in foreign countries. Transactions with these partners may involve other monetary currencies, and the tracking and reporting of these multi-currency transactions is a challenging task. That's where SouthWare's International Transactions comes in.

S O U T H W A R E   E X C E L L E N C E   S E R I E S   >

## BENEFITS

### EXCELLENCE SERIES TOOLS



Currency Code Definitions

- Maintain a database of monetary currencies used by your trading partners
- Define the default currency used by each customer/vendor
- Update the effective exchange rates for currencies as often as you wish
- Record the currency amounts for selected transactions, including the effective exchange rate
- Display transaction amount information in natural currency or base currency (dollars)
- Analyze unrealized currency exchange gains/losses
- Revalue A/R and A/P open items for changes in exchange rates
- Automatically calculate gain/loss on currency exchange when settling a transaction (typically at payment time)
- Update G/L for currency exchange gains/losses
- Establish special stock item pricing and costing for each currency

International Transactions provides supplemental features to the SouthWare Excellence Series™ so that you can record, track, and report multi-currency transactions involving international trading partners while maintaining your dollar-based internal records. When you add this product to the Excellence Series you activate currency-related features in several different modules.



## Features & Functionality

### Currency Code Definition

- Five-character code
- Description
- Print/display formatting including symbol, decimal, and negative sign
- Gain/Loss accounts for A/R and A/P

### Currency Rate Info

- Effective Date/Time
- Enter either Rate or Factor
- Optional Note

### Entry of Currency Transaction Info

- Default currency code per vendor/customer
- Specify currency per transaction
- Operator option to override currency defaults
- Effective date rate defaults can be configured per transaction type
- Use fixed (dollar value is constant) or variable (currency amount is constant) rate per transaction
- Toggle display between Natural Currency and Base Currency (dollars)

### Gain/Loss Calculation

- Automatic calculation at transaction settlement time
- Option for periodic revaluation of A/R and A/P open items - choose to actually adjust open item value or just accrue gain/loss
- Option to settle an international transaction in dollars

### Maintain Exchange Rates

### Standard Reporting and Inquiry

- Unrecognized gain/loss report
- History of gain/loss report
- File listings

### Other Integration

- Currency amounts are available in Cash Flow reconciliation
- Related Inquiries allow option to display natural or base amounts
- Optional special stock item pricing and vendor costing per currency



Phone: 662-328-2400  
 Fax: 662-328-4858  
 E-mail: sales@btmsolutions.com  
 Address:  
 572 Yorkville Road East  
 Columbus, Mississippi 39702

