

# Item Group Matrix

Do items you sell belong to groups or styles that can be presented via a row/column matrix such as color/size? Do you want to be able to enter and review quantities for items via a row/column matrix? Then you need SouthWare's Item Group Matrix Adapter.

S O U T H W A R E   E X C E L L E N C E   S E R I E S   >

## BENEFITS

### DISTRIBUTION

COLORS / ...	S	M	L	XL
RED	1			
BLUE		2		
BLACK				
STONE	1			
DK. NAVY				4
ROYAL	2			
HUNTER				

Stock # 225L-RYL-S  
Ladies' Interlock Sport Shirt  
Size 100% Cotton  
ROYAL/S  
Unit Price: 38.950

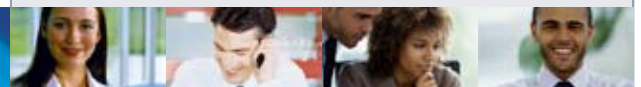
Quantity Available: .000  
Quantity on Backorder: .000  
Quantity on Order: .000

Print Matrix   OK   Abandon Changes

Matrix Entry in Sales Orders

- Utilize different matrix types of row/column combinations such as clothing color/size, shoe color/size, variety/size, product/user count, pants waist/inseam, lumber dimensions, plant size/variety, etc.
- Identify all the row/column attributes that apply to a matrix type
- Specify which attributes apply to each group matrix
- Use the same group definition in multiple locations
- Automatically generate stock records needed for group row/column combinations OR use existing stock numbers
- Specify a stock number format to use for generated stock numbers
- Indicate that certain row/column combinations are not applicable within a group
- Inquire stock item information for items in a matrix group
- Easily view and edit the quantities for group matrix items via a grid or tree in the following entry programs: Sales order entry, Purchase order entry, Purchasing work file entry, Service order entry, and Receiving entry

With this add-on module for SouthWare's Inventory Series you could set up colors as matrix group rows and sizes as columns and then easily buy, receive, and sell items within the group. You can quickly enter multiple quantities for items within a group and the system will generate the necessary related transactions.



## Features & Functionality

### Matrix Types

- Multiple matrix types for different row/column situations
- Ten-character ID for easy reference
- Define row and column descriptions

### Matrix Type Row/Column Attributes

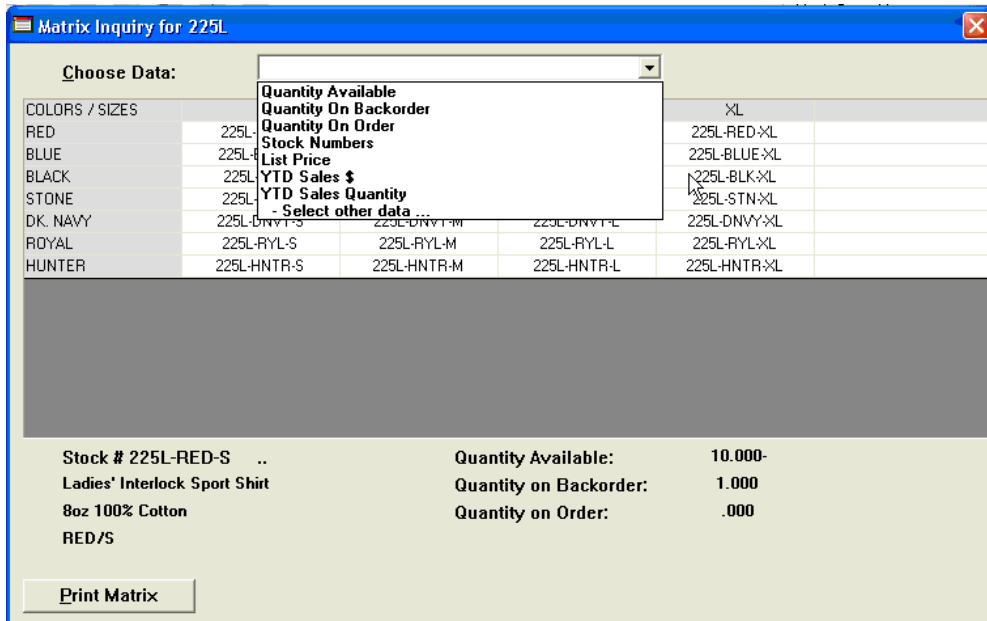
- Ten-character ID for virtually unlimited attributes per row and per column
- Specify whether an attribute should default to active for a new group
- Optional sequence number to control sequence in which attributes display

### Matrix Groups

- Group or style that references related stock items
- 15-character ID for easy reference
- Description
- Associated with particular matrix type
- Define which attributes apply to group
  - Defaults active attributes
  - May indicate if attributes are not applicable to the group (e.g. XXL is not a valid size for this style)
- Each row/column combination represents one stock record

### Flexible Stock Numbering

- Option to use existing stock numbers for row/column combinations
- Option to automatically create stock records for row/column combinations in a group
- Stock Number format defined per matrix type - combination of group/row/column IDs
- Option to generate different price multiplier per row or per column
- Define stock record to use as template for created records



Flexible Matrix Inquiry

### Inquiry and Reporting

- Item Matrix Group Tree View Manager
- Expand group into rows/columns, into individual attributes, and then into related stock items
- Preview pane to see current status of each item
- Inquiry grid allows you to specify a data field value to show for each stock item in group including quantity available, sales YTD, quantity on order, list price, stock number, etc.
- Standard reporting with ReportMate-formatted reports for easy customization
- Numerous management reports including matrix of quantity available, sales YTD, open orders, open purchase orders, and various listings

### Integration with Inventory Series

- Enter a matrix group ID for grid display/entry in the following programs:
  - Billing entry such as Order Entry and Point of Sale
  - Service order entry
  - Purchase order entry
  - Automatic purchasing work file editing
  - Receivings entry
- Fast entry of quantities in grid creates related transaction line
- Resulting transactions may be edited via matrix grid



Phone: 662-328-2400  
 Fax: 662-328-4858  
 E-mail: sales@btmsolutions.com  
 Address:  
 572 Yorkville Road East  
 Columbus, Mississippi 39702

