

SouthWare NetLink™

SouthWare NetLink works with existing technology in the SouthWare Excellence Series™ to provide a comprehensive e-business solution. You may easily publish any of your business data to authorized users and receive data back from them that is validated before updating your files. You can customize every aspect of your e-business site, and there are many features you can customize yourself without hiring expensive help.

S O U T H W A R E E X C E L L E N C E S E R I E S >

BENEFITS

E-BUSINESS SOLUTIONS

Customer Start Page - Carl Sanders

Put your special sales info and other notices here!!

Good afternoon, Carl Sanders!

Please let us know if you have any questions about the information available here. Your sales contact is:

Blake Robbins

Here's the current contact information we show for your company in our records:

Carl Sanders
123 Magnolia Avenue
Auburn, AL 36839

Contact: Carl Sanders
Phone: 334 821 2342
Fax: 334 821 2344
E-Mail: CARL@SANDERS.COM

Order Summary - Carl Sanders

Item Number: 800
Loc: 001
Description: 747 Swingline Desk Stapler
Quantity: 1,000 EA
Unit Price: 24.90
Total Price: 24.90

Customer Open Service Orders - Carl Sanders

S/O Number	Contract #	Date/Time In	Date/Time Due	Problem	Sts	Customer P/O#	Charges
0100000000	(none)	07/05/04 1535	07/05/04 1530	GEN AUSTIN 30	E	(none)	.00
0100000001	(none)	11/03/04 1318	11/03/04 1315	CP CORNER	S	(none)	400.00
0100000002	(none)	09/27/04 1443	09/27/04 1444	CP CORNER	S	(none)	.00
0100000003	(none)	10/02/04 1702	10/02/04 1702	CP CORNER	S	(none)	.00

Standard
Customer
Options

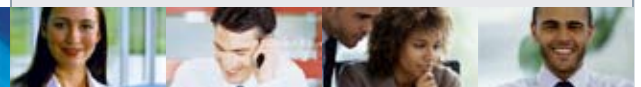
Order
Shopping
Cart

Easy Customer Self-service

Since NetLink is tightly integrated with the SouthWare Excellence Series™ you can get the best of the two computer worlds:

- For high-volume processing of business information you get the power, speed, control, and built-in sophistication of SouthWare's mature business applications running on your internal system. Your day-to-day work is not hindered by the limitations of browser-based access.
- You and your partners can use Web browsers to access selected data and send data to be updated using the "stateless" transaction-based mode of intranets and the Internet. You are working with the same data file formats as the standard applications, so your data can be on-line if you wish.

SouthWare NetLink is a revolutionary tool that lets you provide simple and controlled browser-based network access to your company data files. It can be used for Internet, intranet, and extranet applications.



Features & Functionality

Easy Set Up

- Works "out of the box" for SouthWare users
- Works with standard SouthWare data files

Flexible Server Configuration

- Portable to any Server that supports CGI
- Allows live or off-line data
- Supports single or multiple company files

Controlled Data Access

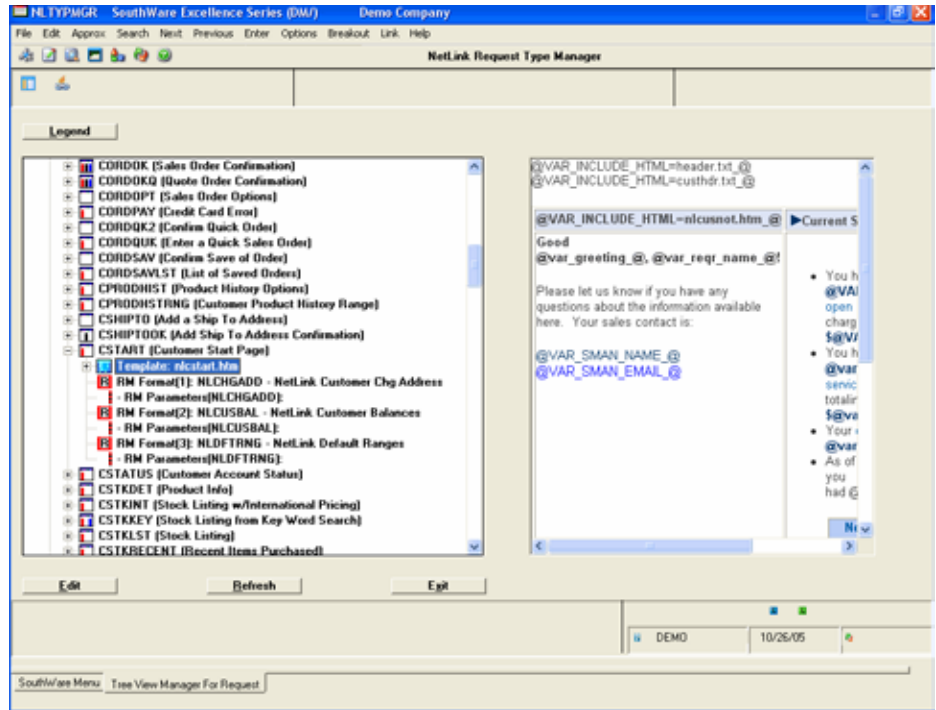
- Valid requestor logins
- Security masking per requestor and request
- Data access limited to fields you include in a request - no free-format data requests
- Session info links each request to a valid requestor login
- Automatic Time Out for sessions
- Optional Logoff function

Unlimited Customizable Request Types

- Numerous pre-defined requests
- Option to create requests for any data or requestor type
- Customizable HTML templates provide "look" for each request page - easily edited via HTML editor or text editor
- Numerous standard variables and unlimited user-defined variables to extract data
- Templates use Cascading Style Sheets for easy modification

Comprehensive Order Entry Function

- Order shopping cart is saved until order is submitted
- Provides defaults and pricing per customer
- Catalog lookup
- Automatically create customer for new sale
- Easy add/change/delete of line items
- Numerous options to show item pictures, notes, and discount from List Price
- Optionally supports SSL encryption for secure transmission of data



Easy Organization and Customization of Pages

Data Extract via ReportMate™

- Any data available in ReportMate may be included in a Request
- Option for browser table formatting

Data Input via ImportMate II™

- Receive form data as importable data files
- Validation to ensure data integrity
- Allows interactive or batch (off-line) update

Example requests you can process using NetLink:

- Sales orders submitted from customers and employees
- Customer request for account balance and related details
- Employee request for customer-related info
- Customer requests for service (to result in a service order)
- Requests for marketing materials
- Changes of address or phone number
- Request for details of an invoice

- Request for details of a purchase order
- Review of product history
- Vendor review of open purchase orders
- Review of shipped status of open sales
- Review of product catalog and pricing
- Dispatch status of open service calls
- Internal review of current financial statements
- Access to employee personnel info
- Anything else you can access with ReportMate and ImportMate II



SouthWare Innovations, Inc.
P.O. Box 3040
Auburn, AL 36831-3040
Phone: 334-821-1108
Fax: 334-821-1146