

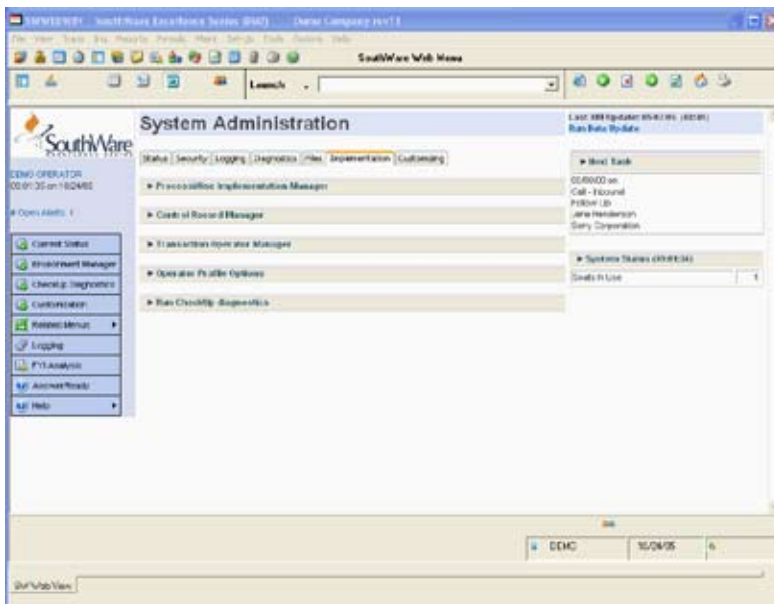
# SwiftMate™

SwiftMate is the system environment for SouthWare's Excellence Series™ that can be custom-fitted to the tasks your people perform. And your entire system is made more valuable through the special security, communication, and other company-wide functions provided by SwiftMate.

S O U T H W A R E   E X C E L L E N C E   S E R I E S   >

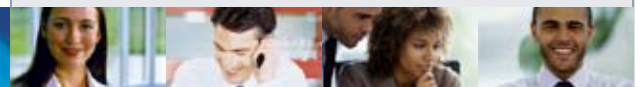
## BENEFITS

### EXCELLENCE SERIES TOOLS



Easy System Administration with WebView Portal

- Get your system up and running quickly and smoothly
- Control which functions each operator may access and use
- Utilize Role-Specific webpage menus for each user
- Know and monitor who's using the system and what they are doing
- Switch between multiple open programs with always-available tabs
- See instant on-screen help explanations about the function you're using and control the amount of help given per operator
- Interrupt any task to do another function, then return and resume where you left off
- Have a common menu environment for all your software, even your non-SouthWare products
- Configure your system to match the terminals, printers, and other computer hardware that you use
- Customize your user interface with SouthWare style options, including variable graphical menus, pull-down menus, and button bars
- "Program" new features into your SouthWare products with Objects, Remote Control Field Packets, and Field Filters
- Create Zoom Views to provide unique summaries of your data with "road maps" to further information



## Features & Functionality

### Installation Features

- Automated product installation
- Define terminal features per user - functions keys, colors, compress display, pass-thru printing, cash drawers, fax interfaces, phone dialers, etc.
- Unlimited printer configurations

### Security Features

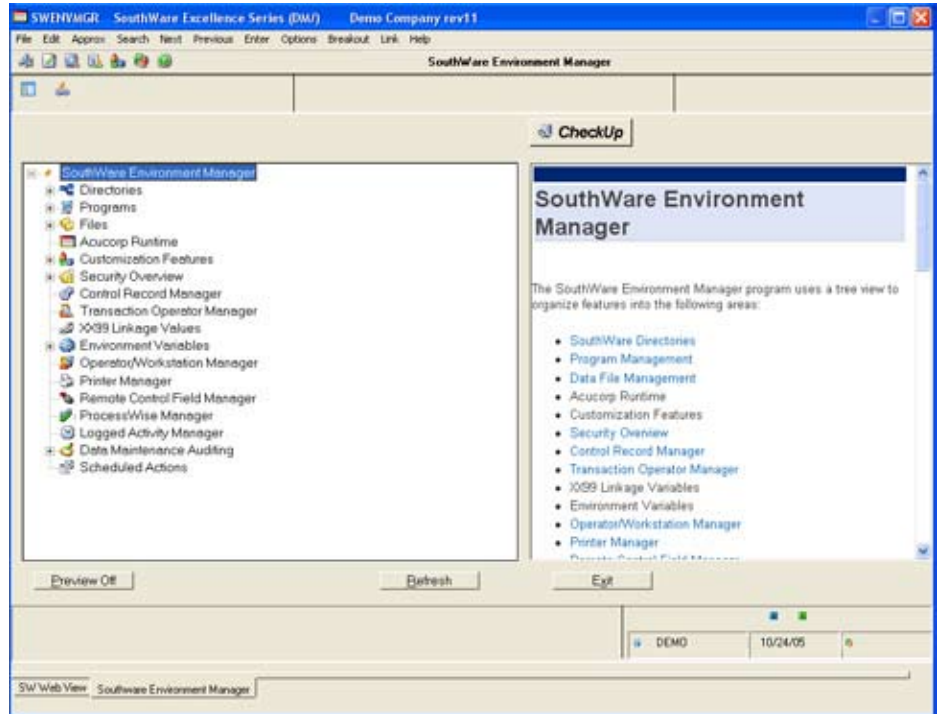
- Security level per operator per product
- Option to add selective customized security
- Menus change to match operator security
- Optional logging of selected system activity
- Secure certain features such as access to operating system and direct program calls
- Each set of files (company) has its own security and file subdirectory

### Operator Convenience Features

- Multi-level personal breakout to interrupt any task, access other programs, then resume your original task
- Keystroke macros
- Style options (including graphical features)
- RapidKeys and variable button bars
- User-defined links between programs

### Menu Features

- Standard or user-defined shortcuts
- User-definable graphical menus
- Processing menus serve as checklists
- Optional customizable pull-down menus
- Add non-SouthWare products to menu
- User-maintainable menu appearance
- Zoom Views for EUI Style
- Independent task windows (Windows only)



*Comprehensive Environment Manager Tool*

### Help-Related Features

- Customizable help for menus and fields
- Automatic or manual help display
- Results index, Q/A database, Extended Help and Hints for further explanation

### Other Special Features

- StopCheck™ for automatic system checking and status reporting
- Print manager program for spooled reports
- Send mail between operators or over Internet
- Message feature for broadcasting to users
- Objects, Field-Level Objects, and Filters
- Numerous special-purpose utility programs

### SwiftMate makes your entire system more valuable:

- Multi-user capability is built-in, not just added on
- Your security scheme can be as simple or as complex as you need

- All products are integrated into one menu
- Choose from various user Style options, including graphical and non-graphical features
- Your system is very portable and runs on hundreds of computers of all sizes
- Customize your system with Views, Objects, and Field-Level Objects
- You can customize Help and a Question/Answer database so your people can answer their own questions
- You know who's been doing what on the system

